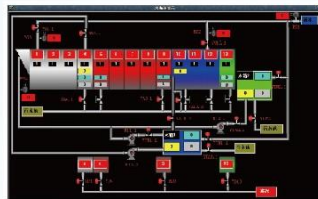


TUNNEL WASHER SYSTEM (CBW)

SX-B5013

SX-B7516



Features and Benefits

- Intelligent swaying angle control improve stability and cleaning result
- Precise level control by central control system eliminate clogging during transfer
- Fluid circulation system collect wash water from each wash zone and store in various water tanks to minimize water consumption
- Reuse heat and detergent in pre-wash and main wash
- Independent water temperature control system provides accurate water temperature for different wash process and detergent to maintain best quality
- Inner drum made by high precision manufacturing process using NC welding machines
- VSR treatment to remove the internal stress after welding
- Special designed seal with heat, abrasion and chemical resistance, ensure long lasting life span and reliability
- Number of compartments can be customized

TECHNICAL SPECIFICATIONS

MODEL	SX-B5013	SX-B7516
Compartment Loading (Dry Weight)	50kg	75kg
Number of Compartment	13	16
Capacity	1200kg/hour	2250kg/hour
Batch Transfer System	Bottom	Bottom
Position of Outer Drum (Compartment #)	4,5,9,10,12,13	5,6,11,12,13,14,15
CONNECTION		
Total Power	36kw	47kw
Compressed Air Pressure	0.6Mpa	0.6Mpa
Compressed Air Consumption	6000L/h	10400L/h
Compressed Air Connection	8mm	15mm
Steam Pressure	0.4Mpa	0.4Mpa
Steam Consumption	520kg/h	960kg/h
Steam Connection	DN65	DN80
Water Pressure	0.3Mpa	0.3Mpa
Water Consumption	7,800L/h	14,400L/h
Water Connection	DN50	DN65
Drain Connection	125mm	150mm
Drain Flowrate	7,500L/h	14,000L/h
DIMENSION		
Length	12200mm	16100mm
Width	2150mm	2680mm
Height	3180mm	3310mm
Weight	19,000kg	23,020kg

For products improvement purpose, we reserve the rights to change the specification without notice

Presented by **ONE LAUNDRY MACHINERY CO. LTD.**

Address: No.2597, Puwei Highway, Fengxian District, Shanghai, 201402 China

Tel: 86-21-57407226 Fax: 86-21-57401206 (Hotline 86-13918704075, 60-147462636)

Website: www.onelaundry.com Email: info@onelaundry.com